



VPS College of Arts, Science & Commerce Lonavala

4.1.1 - The Institution has adequate infrastructure and physical facilities for teaching-learning, viz., classrooms, laboratories, computing equipments, etc.



Gate



Building 1



Building 1

ELECTRONICS LABS



CLASS ROOM



Class 1



Class 2

COMPUTER LAB





Comp Lab 2



Comp Lab 3



UPS Room

LIBRARY





Library



Anti Ragging



Ban on use of Plastic



Furniture



Furniture



Furniture



Board's



Board's



Principal Cabin



Admin Office



Ground 1



Ground 2



Ground 3



Ground 4



Ground 5



Badminton Court



Yoga 1



Yoga 2



Yoga 3



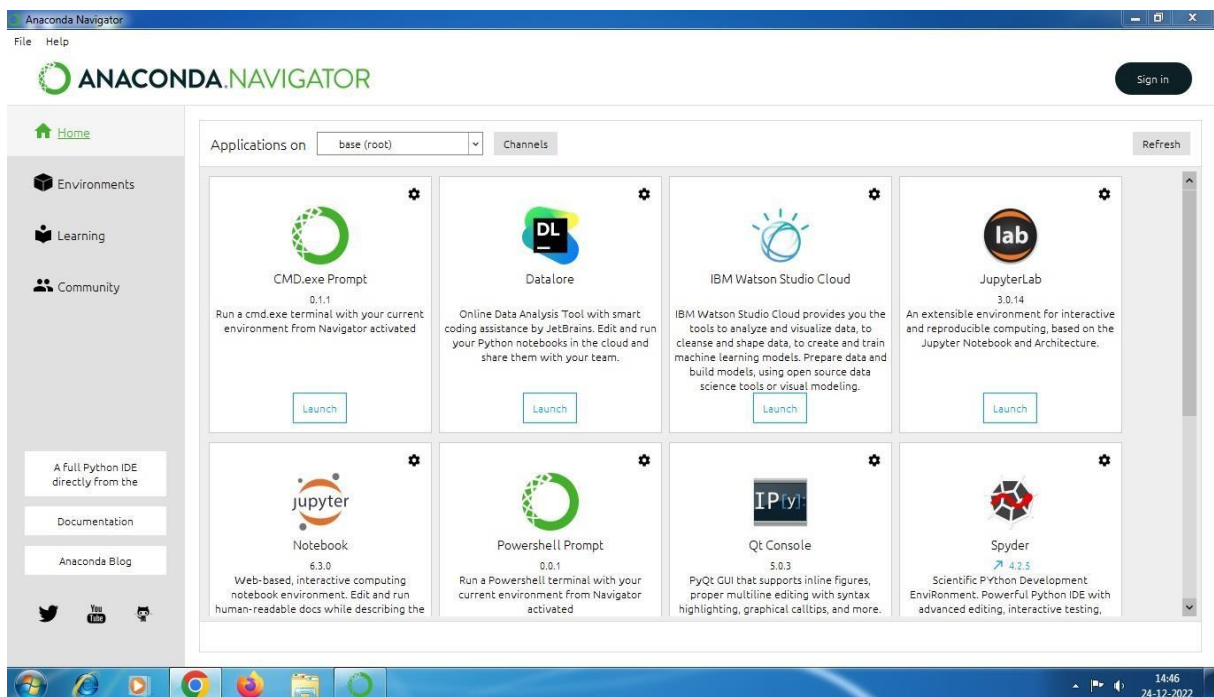
Office



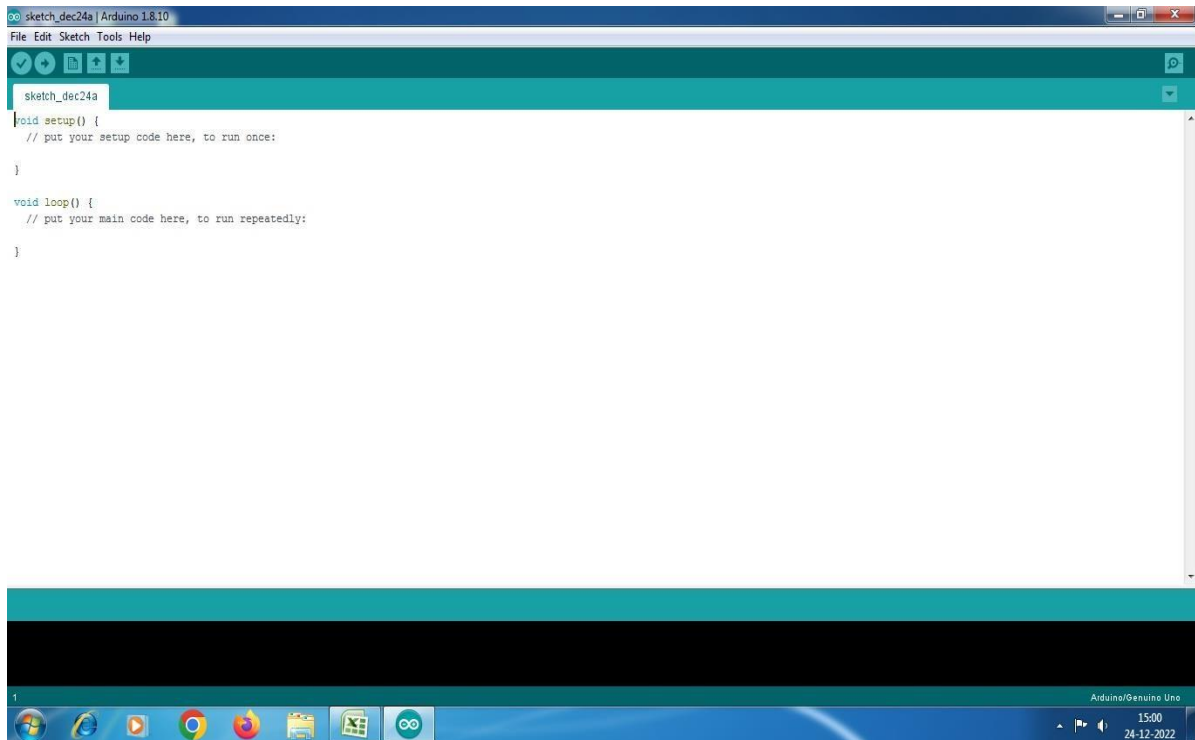
Ro Drinking Water Plant



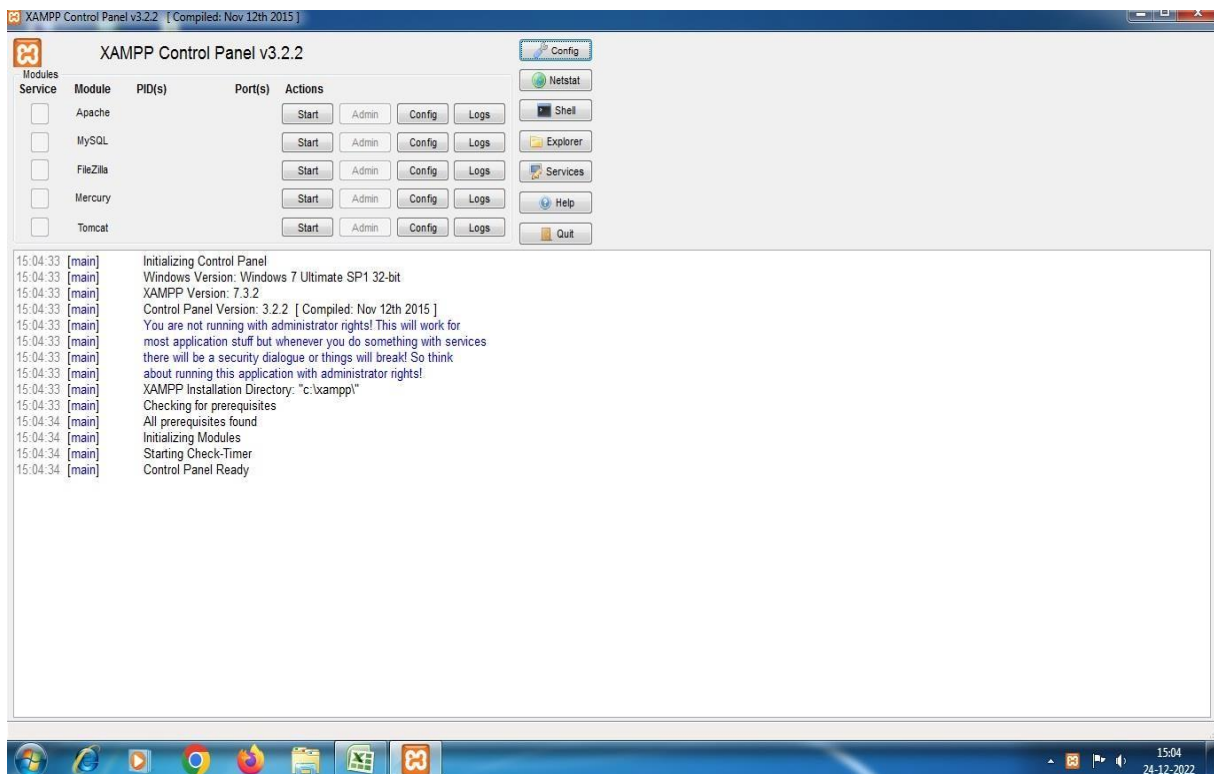
200 MBPS WiFi



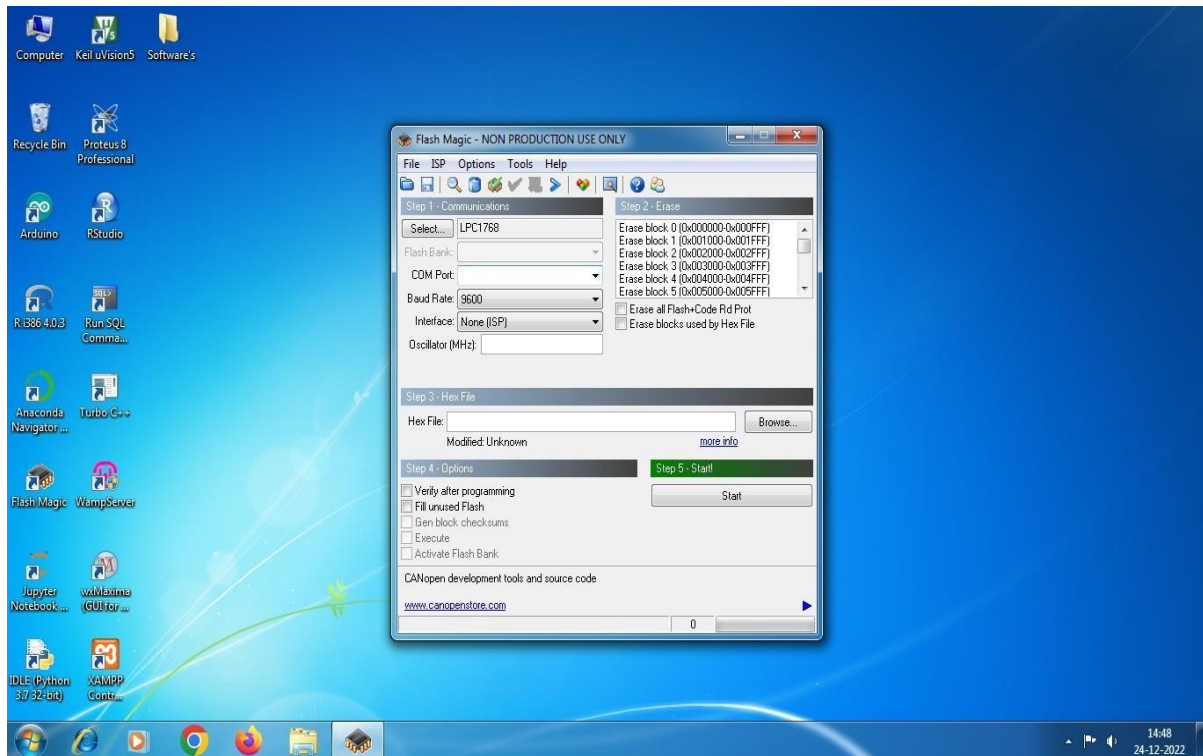
Anaconda Navigator



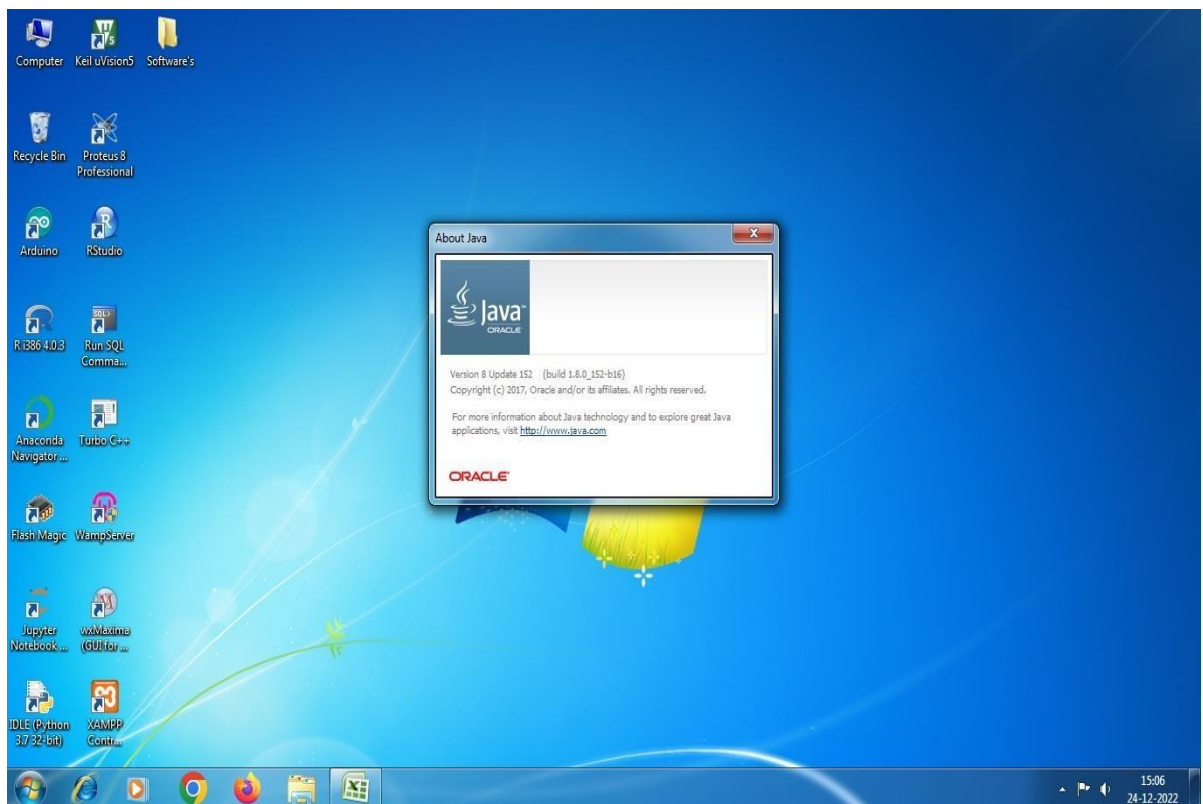
8 Arduino 1.8.10



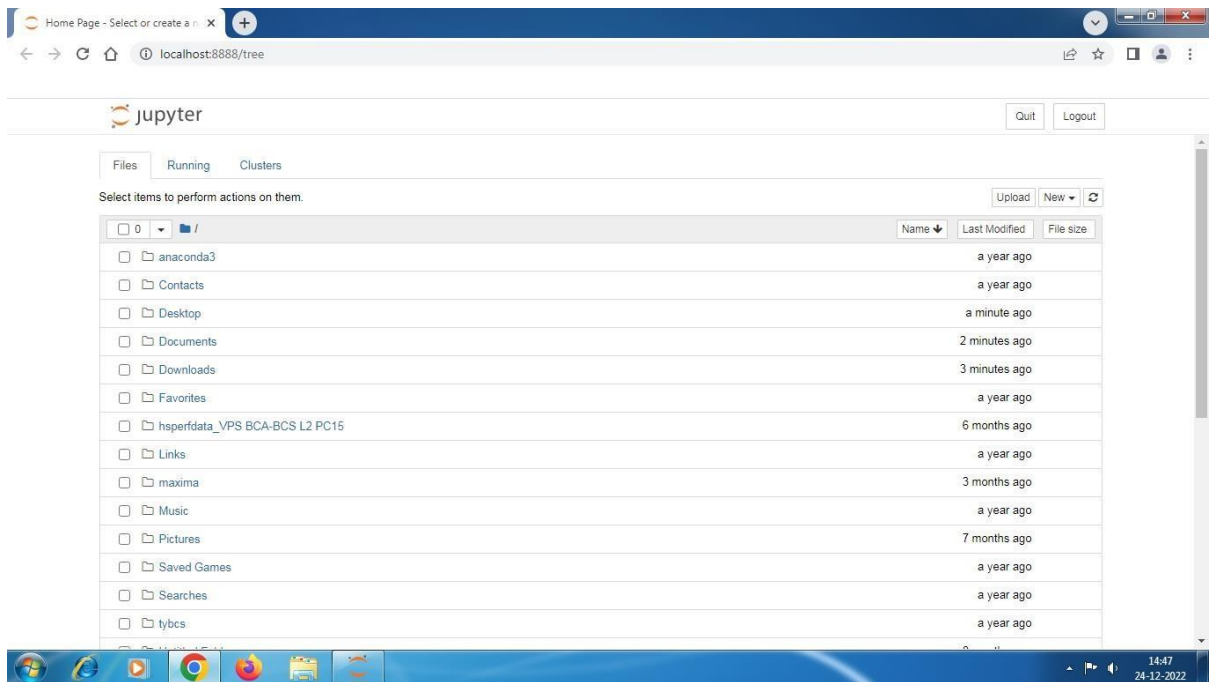
XAMPP Control Panel v3.2.2



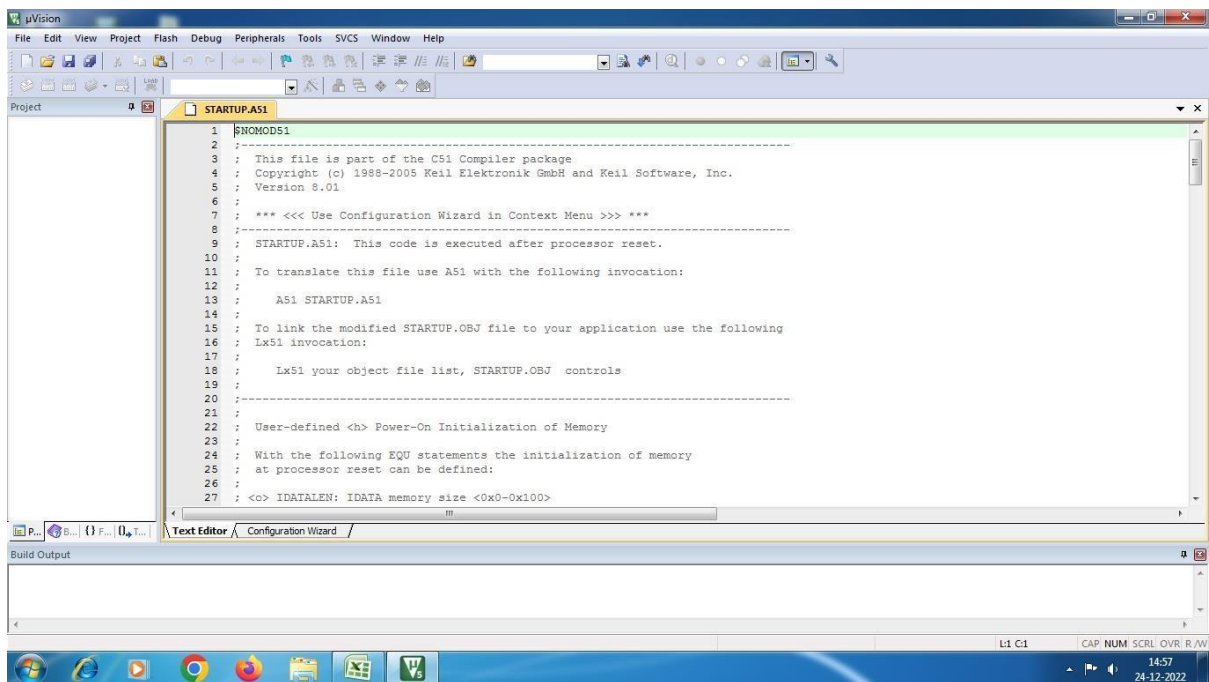
FLASH MAGIC



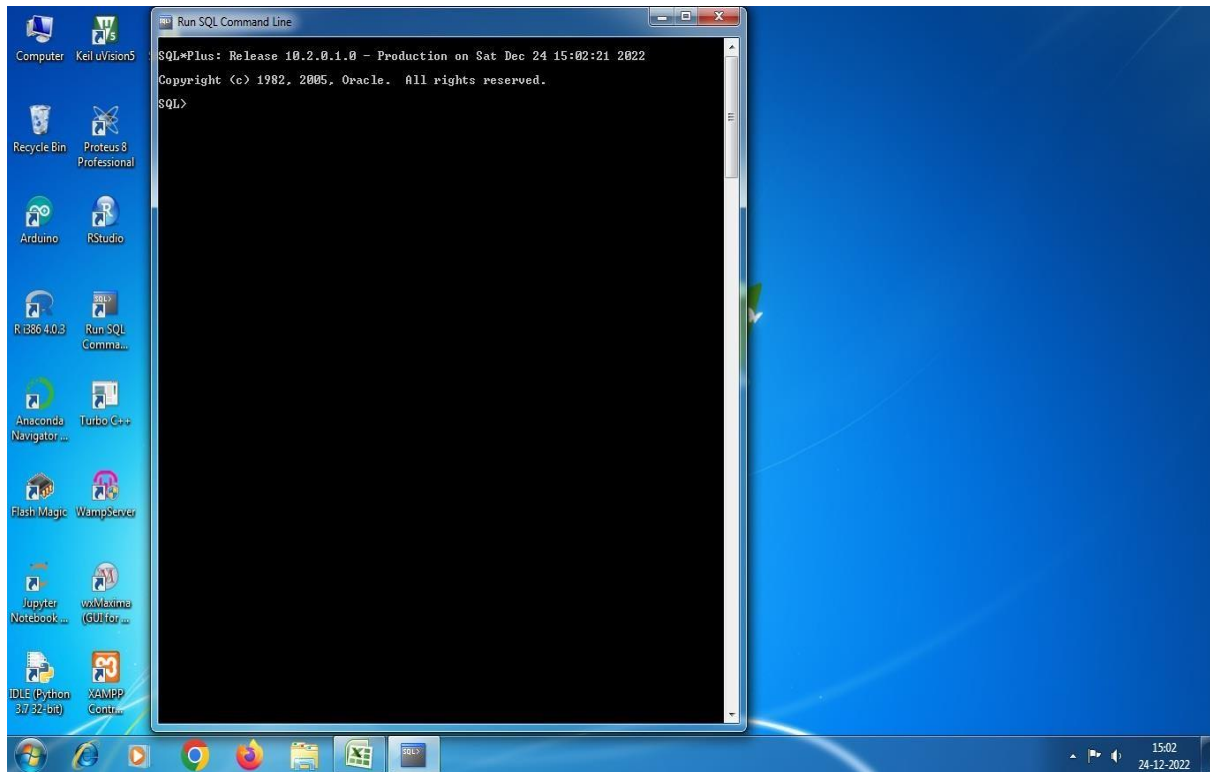
JAVA 1.6



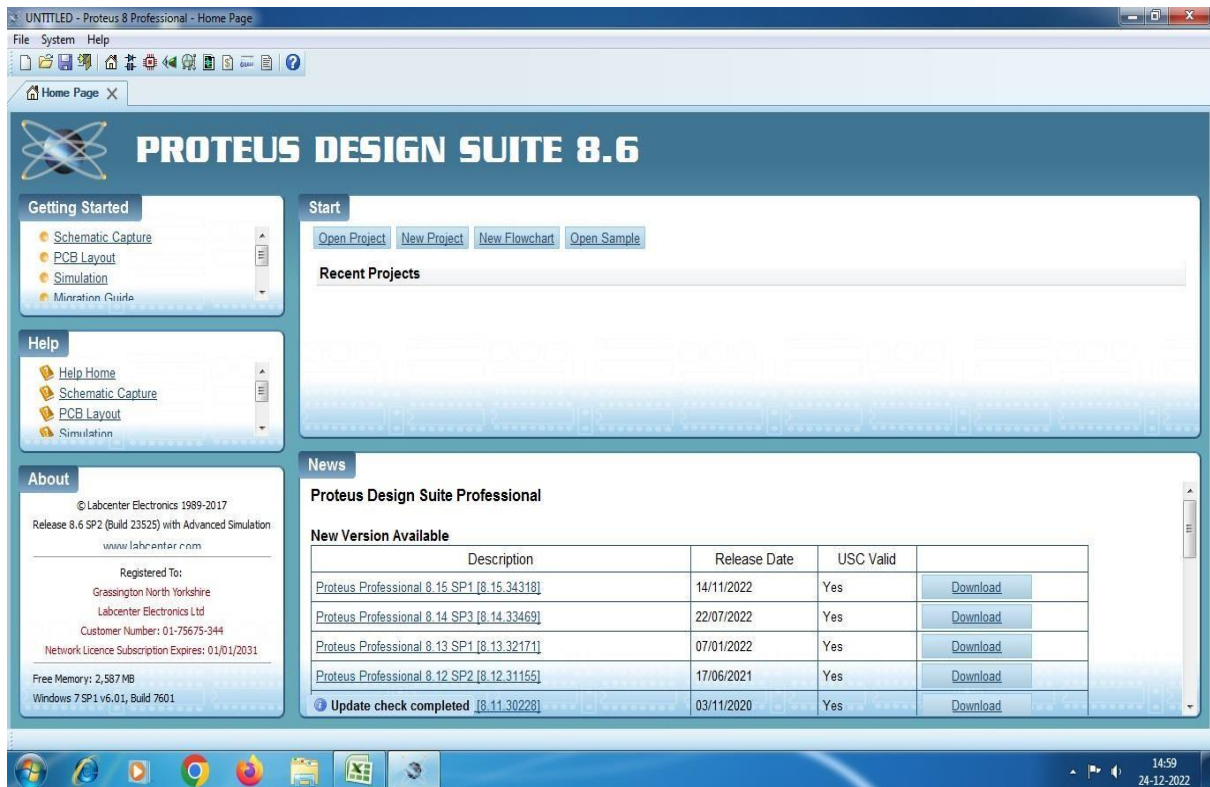
Jupyter



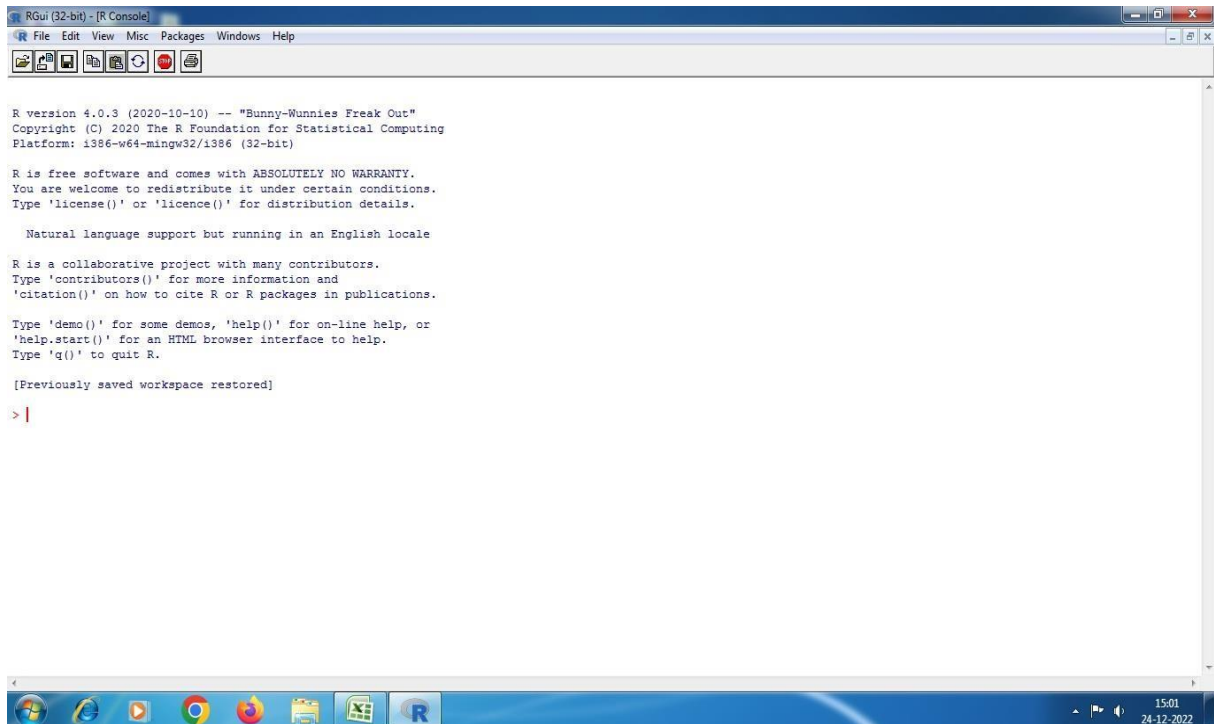
Keil uVision5



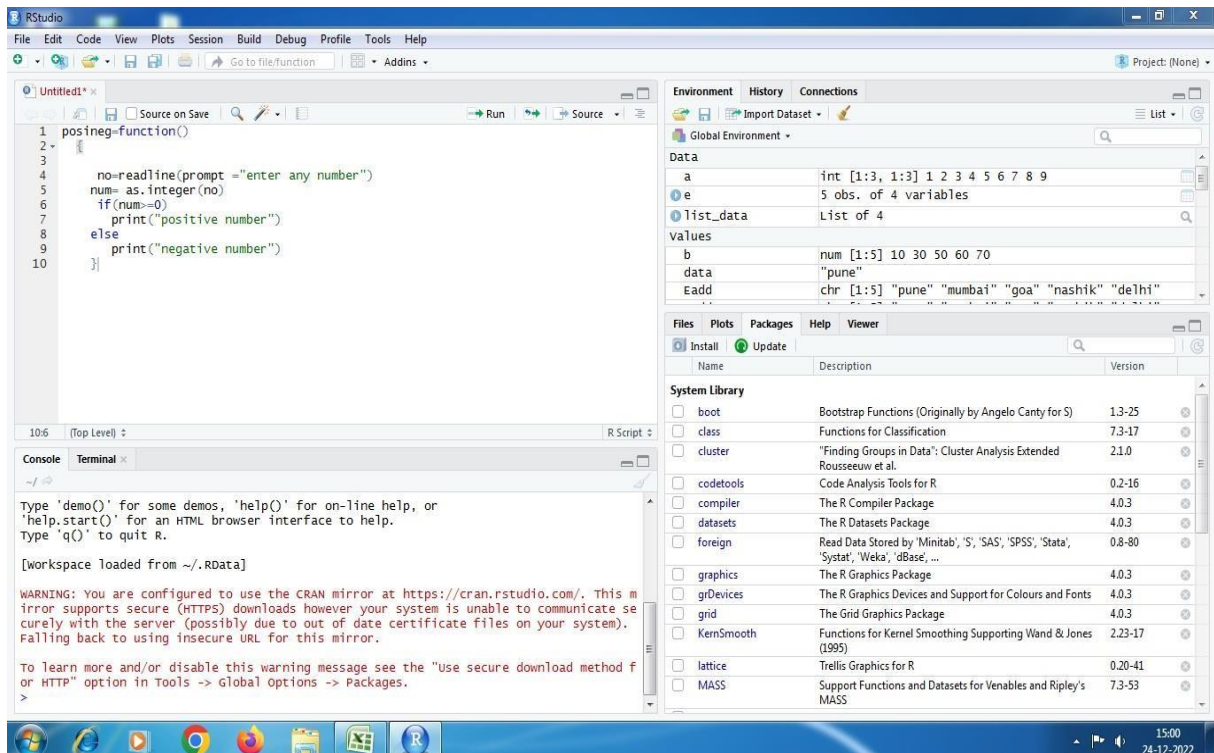
Oracle Database 10g Express Edition



Proteus 8 Professional



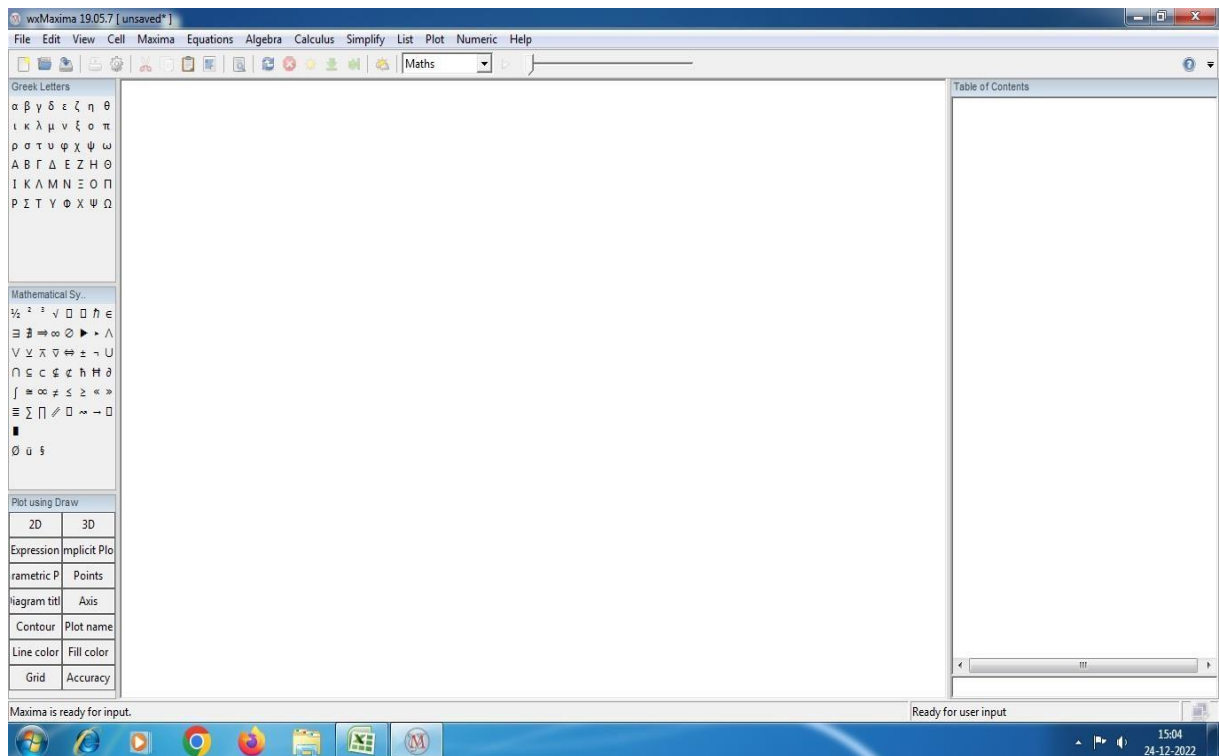
R i386 4.0.3



RStudio

```
{
return(s->top== -1);
}
int isfull(STACK *s)
{
return(s->top==max-1)
}
void push(int n,STACK *S)
{
if(!isfull(s))
{
s->data[s->top++]=n;
}
else
printf("STACK is full");
}
int pop(STACK *S)
{
if(!isempty(s))
```

Turbo c++



wxMaxima (GUI for Maxima)

