



## VPS College of Arts, Science & Commerce Lonavala

### Best Practice-1

#### Zoophilist (Animal Lover)

Students and Staff members works as Snake Friend and Pet Lover. In this we rescue Snake from human residential area and free them in wild life and also Guide people abouts various species of snakes.

Animal shelters are vital resources for their communities. A shelter is a safe haven for animals, and a great place to adopt a new family pet. Shelters also provide critical services such as investigating cruelty and neglect, reuniting lost pets with their families, teaching kids to care about animals, and providing spay/neuter services to help reduce pet overpopulation

Animal love or animal friendship is the feeling of affection people have towards animals. For most people, love for an animal is a part of the affection they have for their pet, an emotion of bonding or companionship which can border on affection, fondness, or love. For others it takes on deeper or even compulsive forms, surrounding themselves with often stray animals out of compassion and becoming somewhat isolated from society.

At an extreme, a compulsive behavior to care for animals can cause problems or even result in unintended animal abuse, as such people are not always capable of taking care of all the animals properly and neighbours often complain about the noise and smell.

The love for animals stems from many causes. For many people

PRINCIPAL  
Vidya Prasanna Sabha's  
College of Arts, Science & Commerce  
Lonavala, Tal:- Maval, Dist:- Pune  
Pin Code:- 410401



often do this very deeply, as do many adults who consider themselves animal lovers. For some people, strong ethical stances are also a part of their love for animals - for example, in connection with or related to conservationism, environmentalism, and/or



**PRINCIPAL**

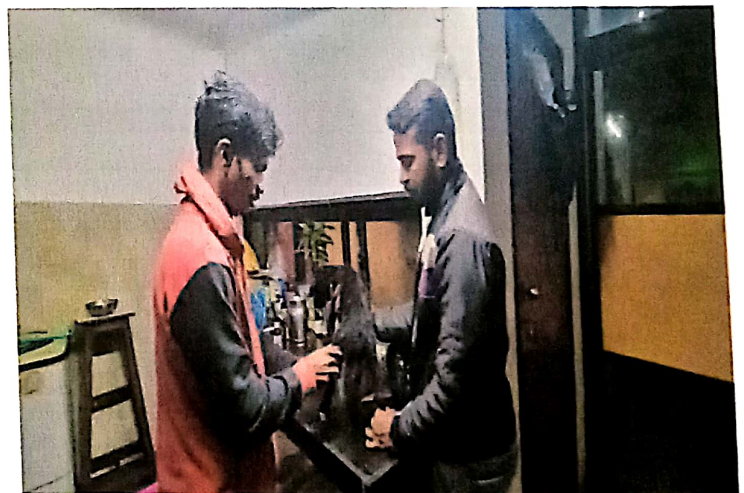
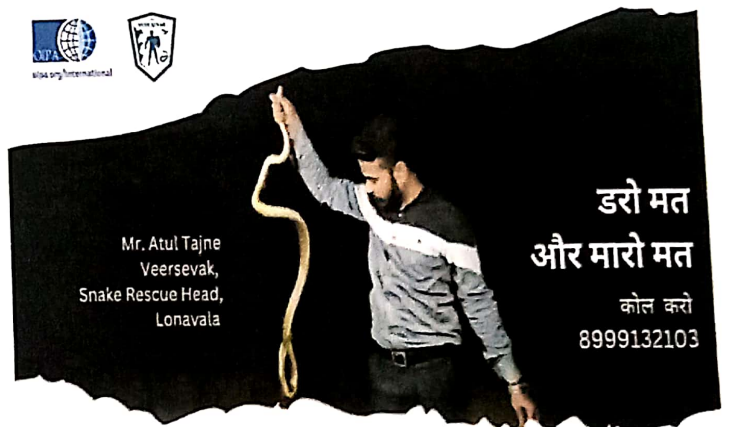
Vidya Prasarni Sabha's  
College of Arts, Science & Comm  
Lonavala, Tal:- Maval, Dist:- Pu  
Pin Code:- 410401



veganism/vegetarianism. One can love animals out of a general respect for nature and the environment, or become a vegetarian or conservationist out of one's love for animals.

We have rescued almost 100+ snakes. We also help street dogs and Cats for adoption, up till now we have help more than 150 street dogs and cats with adoption.

## Photos



PRINCIPAL

Vidya Prasarni Sabha's  
College of Arts, Science & Commerce



Scanned with OKEN Scanner



## Best Practice-2

### Dhol Tasha Pathak

In this activity Staff members give training to students from rural area about our cultural and traditional Dhol Tasha. With the help of this many students have changed their way of living and working as Dhol Tasha vadaak (instrument player). Working as Dhol Tasha vadaak has been help such students financially. Dhol tasha is said to have been an integral part of Maharashtra from the medieval period. The dhol (double-headed drum) was also used to encourage the troupes during wars," says Parag Thakur, president of Dhol tasha mahasangh Maharashtra. The dhol is often known as a mangal vadya (celebratory instrument) as well as ran vadya (instrument for encouragement during a battle).

It is a systematic, energetic and disciplined group dance and art form with rhythm which also helps students develop their overall personality, team building and discipline, besides inculcating cultural values and uniting towards a social change.

These pathaks practice for three hours daily almost one and half months before the Ganesh festival. The dhol sequence usually has five to seven beats with which the pathaks come up with their own variations.

Phatak word is mostly used for a group of people who carry out some kind of a road show. For a group that performs Indian drums (Dhol, Tasha, Pakhawaj etc) during Ganesh processions in Pune is called. Pathak . The dictionary meaning of is mentioned as 'Division' or 'Troop' It's a group of people who belong to certain band or squad. During ganapati days different band pathak's are seen. They perform their skills. Their names are like Sinh garjana Pathak, Shiv garjana

PRINCIPAL  
Vidya Prasarini Sabha's  
College of Arts, Science & Commerce  
Maula, Tal:- Maval, Dist:- Pune  
Pin Code:- 410401



Pathak, bharari phatak, Shaourya dhol Tasha Pathak, Rudra garjana Pathak, Naad Brahma Pathak. They have different instruments which make huge sound suitable for procession. They wear mostly white, pink, yellow ,orange color clothes, put on Phetas or turbans on their head. Women too participate. The atmosphere very is very happening and catchy.

It's a very beautiful and a typical band . You automatically feel like dancing,very rhythmetic and special tradition of Maharashtra. People practuce it for months. They are paid.

## Photos



PRINCIPAL

Vidya Prasarini Sabha's  
College of Arts, Science & Commerce  
Lonavala, Tal:- Maval, Dist:- Pune  
Pin Code:- 410401



Scanned with OKEN Scanner