



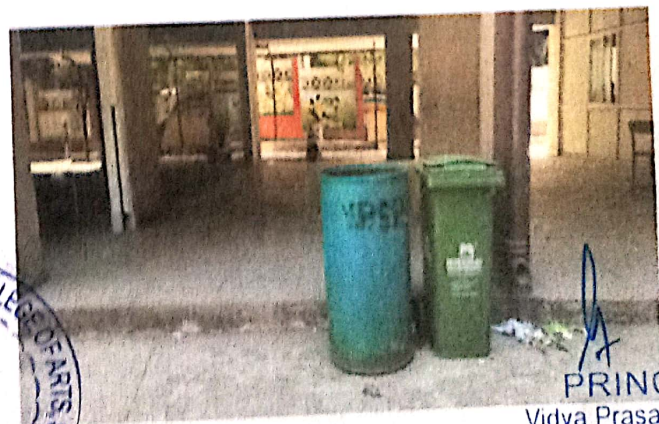
# VPS College of Arts, Science & Commerce Lonavala

7.1.3 - Describe the facilities in the Institution for the management of the following types of degradable and non-degradable waste (within 200 words)  
Solid waste management Liquid waste management Biomedical waste management E-waste management Waste recycling system Hazardous chemicals and radioactive waste management

**Solid Waste Management** - The waste generated at the campus includes wrappers, glass, metals, paper, plastics, etc. Old newspapers, used papers and journal files, workshop scrap etc. are given for recycling to external agencies. Leaf litter is allowed to decompose systematically over a period of time to be used as manure for the gardens in the college. Excess leaf litter is used as compost at the time of tree plantation in the college campus area.

**E-waste management** - The college emphasizes paperless office through use of emails and Google drive to save carbon emission through usage printers. The cartridges of laser printers are refilled outside the college campus.

**Waste Recycling System** - Environmental initiatives like use of renewable energy, Rain water harvesting, Sewage treatment plants, Zero water discharge, No smoking zone, waste management system etc have been implemented. Environment consciousness is embodied in the heart of the college by tree plantations every year which is the predominant motive of the management for maintaining the pristine purity and beauty of the college and also to provide a congenial atmosphere for the academic and non-academic pursuits.

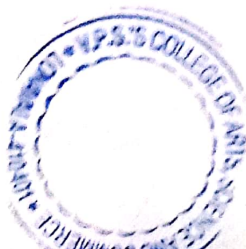



PRINCIPAL

Vidya Prasarni Sabha's  
College of Arts, Science & Commerce  
Lonavala, Tal:- Maval, Dist:-  
Pin Code:- 410401







  
**PRINCIPAL**  
 Vidya Prasadini Sabha's  
 College of Arts, Science & Commerce  
 Lonavala, Tal:- Maval, Dist:- Pune  
 Pin Codes:- 410401

